



Connected  
Community  
WELLNESS SCREEN

*BWell2Excel*

# Connected Community Wellness Screen



**“BWell2Excel”**

# Teen Years

- Teen years are a time of tremendous change – physical & emotional
- Teen mental health plays important role in academic & personal success
- It is important to check emotional health status in teens just as we check eye sight, hearing etc.
- Wellness Screen is an opportunity for parents and teens to better understand these changes.



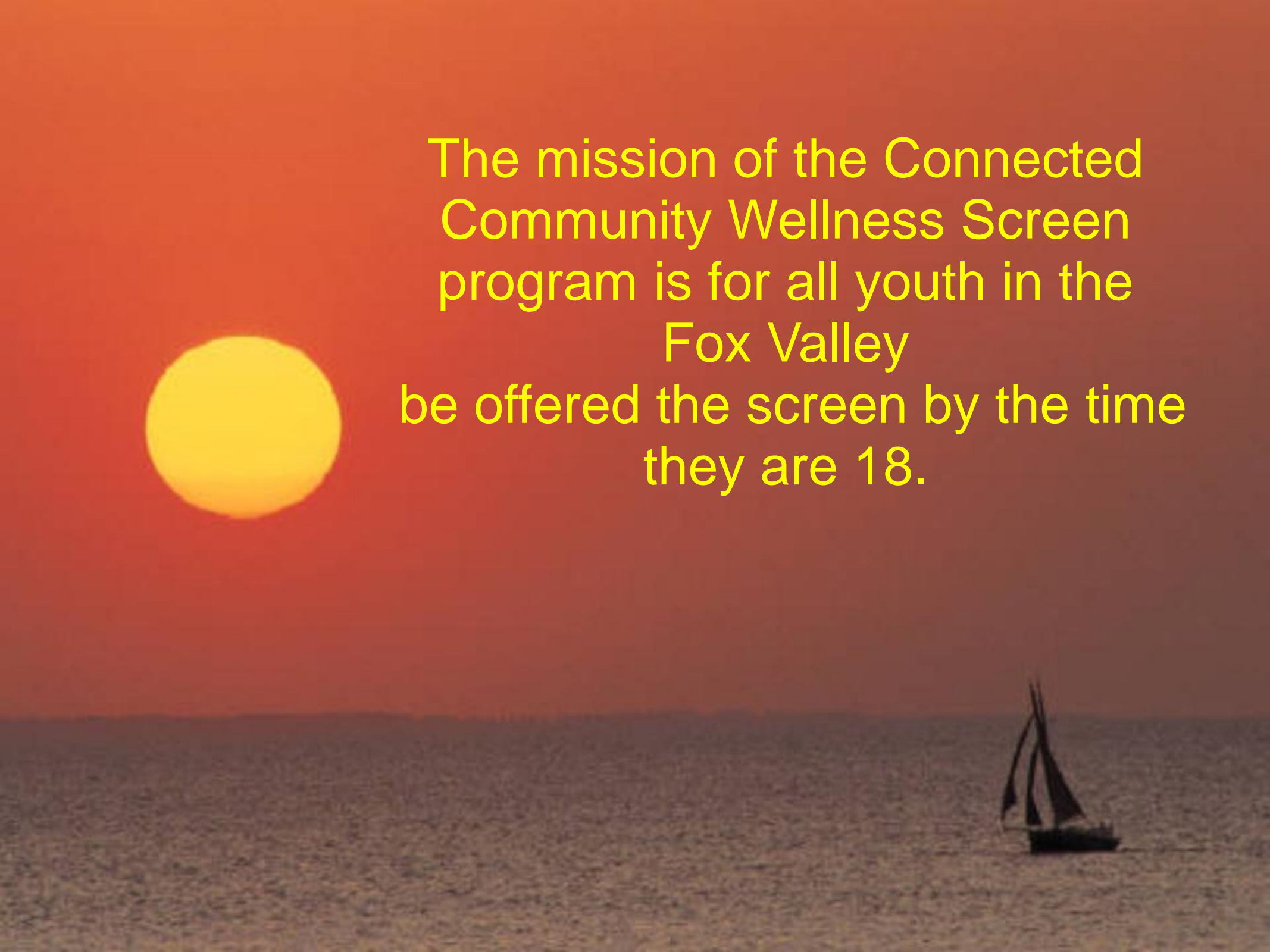
# Massachusetts General Hospital's- Pediatric Symptom Checklist (PSC)

- Developed in 1982, to help identify and intervene with social and emotional needs
  - [http://www.massgeneral.org/psychiatry/assets/PSCY-35\\_English.PDF](http://www.massgeneral.org/psychiatry/assets/PSCY-35_English.PDF)
- Research shows:
  - 90% of youth who died by suicide suffered from a treatable mental illness
  - 63% experience symptoms for at least a year prior to their deaths
- This shattered the myth that suicide is a random and unpredictable event in youth
- Highlights ample opportunity to intervene and offer connection to community resources that can save lives.

# Impact of Emotional Health Concerns

- Schoolwork deteriorates
  - Lower academic scores
  - Less than 50% of students suffering with a serious mental illness graduate High School
- Absenteeism
  - 3times the absentee and tardiness rate



The background of the slide is a photograph of a sunset over the ocean. A large, bright yellow sun is positioned on the left side of the frame. The sky transitions from a deep orange near the horizon to a darker red at the top. In the lower right corner, a small sailboat with dark sails is visible on the water's surface.

The mission of the Connected  
Community Wellness Screen  
program is for all youth in the  
Fox Valley  
be offered the screen by the time  
they are 18.

# Emotional Health Concerns Impact...

- Relationships both with family and peers are at risk
- Can lead to:
  - Depression
  - Anxiety
  - Alcohol & Drug use
  - Suicide
- 10% of American youth suffer with a mental illness and 2/3rds do not receive help



# When your child participates.....

- Offered to all 9<sup>th</sup> grade students
- Uses active parental consent – parents and students must both give permission. Permission slip **MUST** be returned.
- Free, voluntary and **CONFIDENTIAL**
- 10 Minute - Computerized interview
- We meet with all students after computer interview
- We contact parents **ONLY** if student screens positive
- Assistance connecting to community resources if needed



# Case Management Role

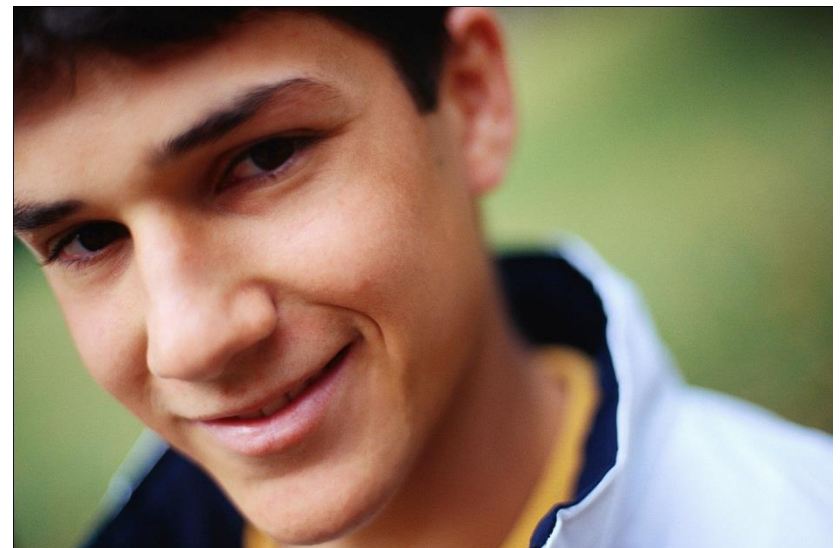
- Parents are only contacted when students screen is positive screens for mental health concerns/suicide risk.
- Case Managers discuss screening results and clinical recommendations for further evaluation.
  - Program does NOT recommend any particular type of treatment
- If a recommendation is given for further evaluation, case managers will help parents connect with community resources.
- Case managers follow students through at least 1 and up to 3 appointments or up to 90days.





## What can Wellness Screen do?

- Identify symptoms
- Help to understand the emotional changes of teenage years.
  - “growing pains” or early stages of something more significant.
- Help connect to community resources.



# At the Heart of the Program

- Successful screening program is due to community collaboration & the support of school faculty and parents.
- Some of our Community Partners include:
  - Samaritan Counseling Center
  - Affinity Behavioral Health
  - UW-Oshkosh and Lawrence University
  - The Boys and Girls Clubs
  - ThedaCare Behavioral Health
  - Local EAP's
  - Family Services Inc.
  - Partnership Community Clinic
  - Catalpa Health
  - NEW Mental Health Connection
  - Outagamie County Health and Human Services
  - School Districts
  - ThedaCare Physicians
  - Winnebago County Health Department



# Connected Community Wellness Screen

- **Wellness Screen staff:**  
Sarah Bassing-Sutton, BA, CSAC  
Hannah Episcopo, MA, LPC-IT  
Chad Lorge, MSE, NCC
- Call Sarah, the Connected Community Wellness Screen Program Director at 920-277-5096 for more information or if you have questions.



[www.samaritan-counseling.com/wellnessscreen.asp](http://www.samaritan-counseling.com/wellnessscreen.asp)

